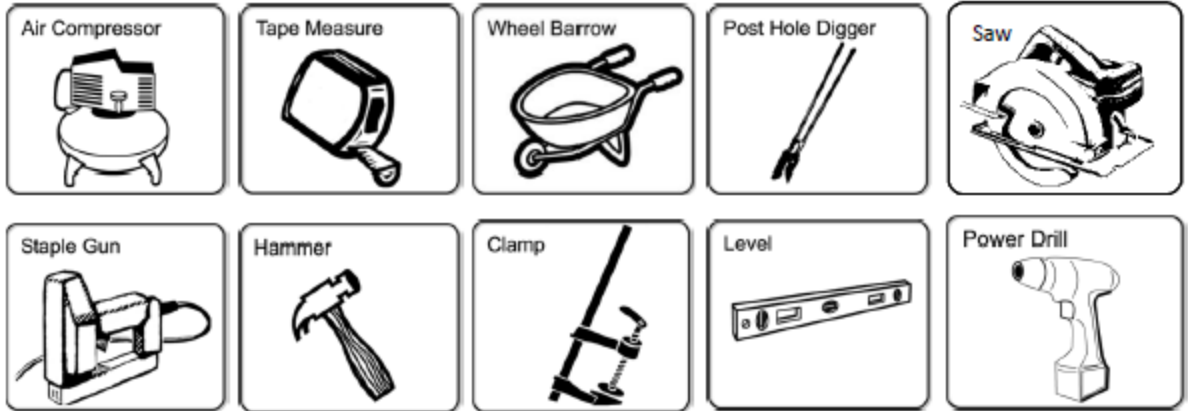


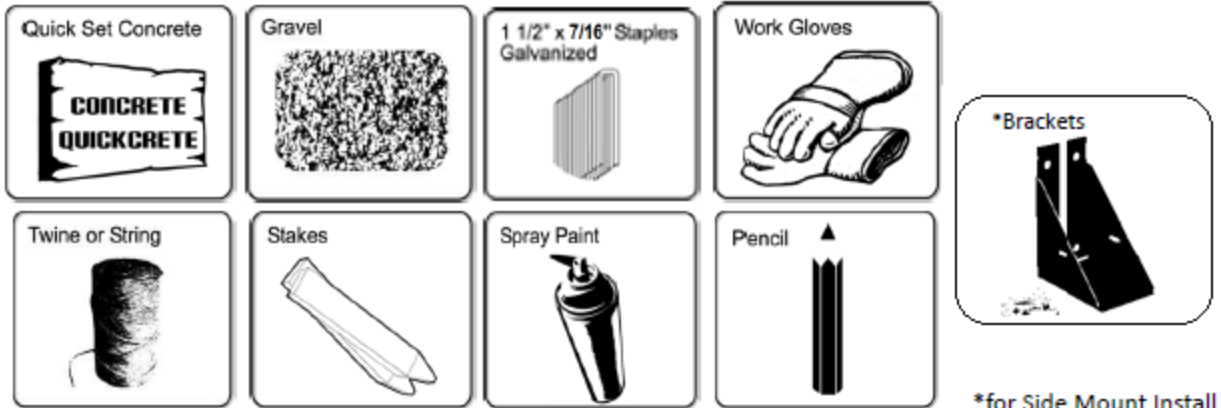
Composite Fencing Installation Instructions

Ranch Rail/Gothic System

Tools Needed:



Supplies:



*for Side Mount Install

Prior to installing fencing:

- ✓ Prior to digging, confirm location of underground utilities with local authorities.
- ✓ Apply for permits if required by local authorities and codes.
- ✓ Local zoning laws, neighborhood associations and/or historic districts may regulate size, type, placement and ability of fencing. Ensure compliance prior to installation.
- ✓ **Due to variation in picket width, minor adjustments to gapping may be required. Care should be taken to ensure that spacing does not result in too large of gap at the end posts**

1. Planning:

- ✓ Determine total area to be fenced.
- ✓ Site-Built installation: Ensure the right amount of pickets and rails per section.

Note: Pre-Built Gothic Panels can only be installed on flat terrain.

- ✓ Make adjustments for odd widths at the back corners or build partial sections equally. Example: if you have 8 feet left in a run, consider building two 4ft sections rather than a 6ft and a 2ft.
- ✓ Determine the number of posts including gate post & gate location (if applicable).
- ✓ Installations are facilitated with the use of an air compressor or air driven staple gun.
Recommended fasteners are 7/16" crown x 1 1/2" galvanized or stainless steel staples, minimum 18ga.

2. Layout (See diagram below)

2A. Establish total area to be fenced. Insert stakes 6" inside of proposed area extending an additional 3' laterally so as not to disturb string lines when digging post holes.

2B. Attach string line to staked area. Verify corners are square using the 3' x 4' x 5' method.

2C. Fence corners are determined by where strings intersect.

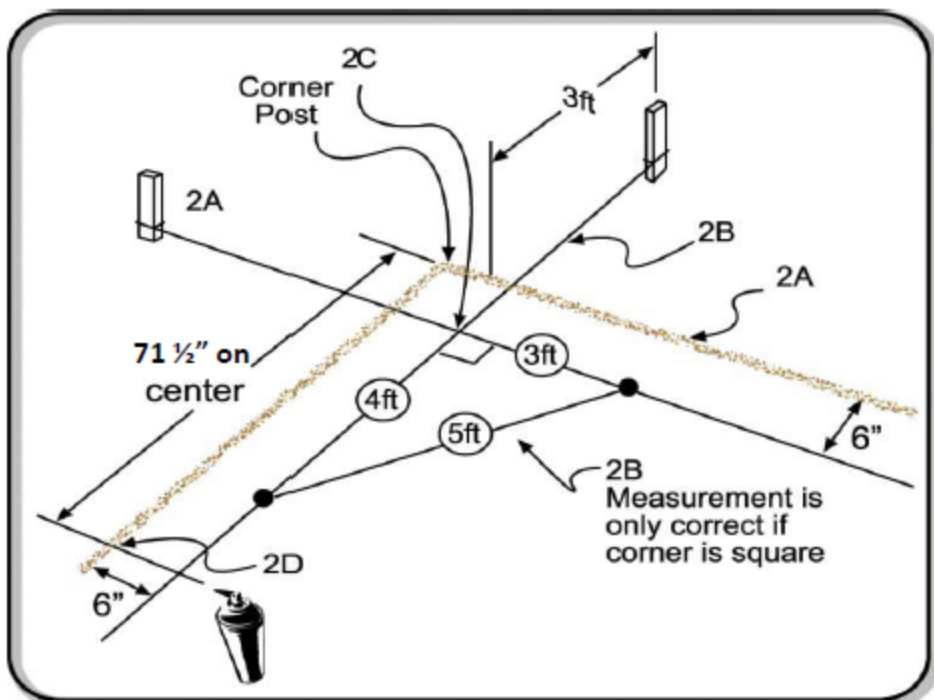
2D. Mark locations for subsequent posts starting with the first location and measuring the appropriate distance determined by install method.

Bracket Side Mount – 71 1/2" post center to post center

2E. Mark gate location and size.

2F. Place proper post at each location.

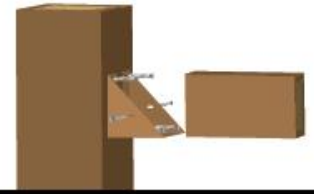
Tip: When marking measurements with spray paint, mark both the ground *and* string (see illustration).



RANCH RAIL

BRACKET MOUNT

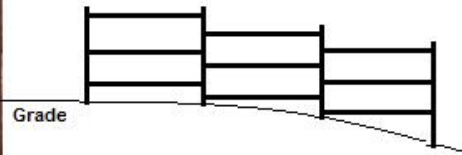
INSTALL INSTRUCTIONS BELOW
67 1/2" inside posts



A: MULTI-PURPOSE POSTS



B: CROSS RAILS



* For sloping: step brackets down

A POSTS



1 Dig Hole :
Dig hole 12" wide x 26" deep



2 Add Gravel :
Add 4" gravel (see chart below)



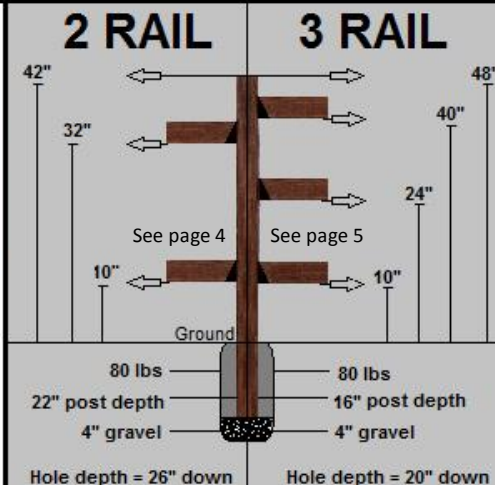
3 Set Post :
Set post + 80 lbs of Quikrete

4 Next Post : Set next post 67 1/2" inside posts

B CROSS RAILS



1 Attach Brackets :
Use chart to find rail heights. Measure up from ground, mark post for bracket bottom. Attach with provided screws. Secure rails into brackets with screws.



C GATES

1 Construct Z - BOX :

Construct a gate using the usual 2 or 3 rails + an additional 3 rails. Form rails into a squared box design, then add a diagonal rail to give the gate a strong Z - BOX figure.

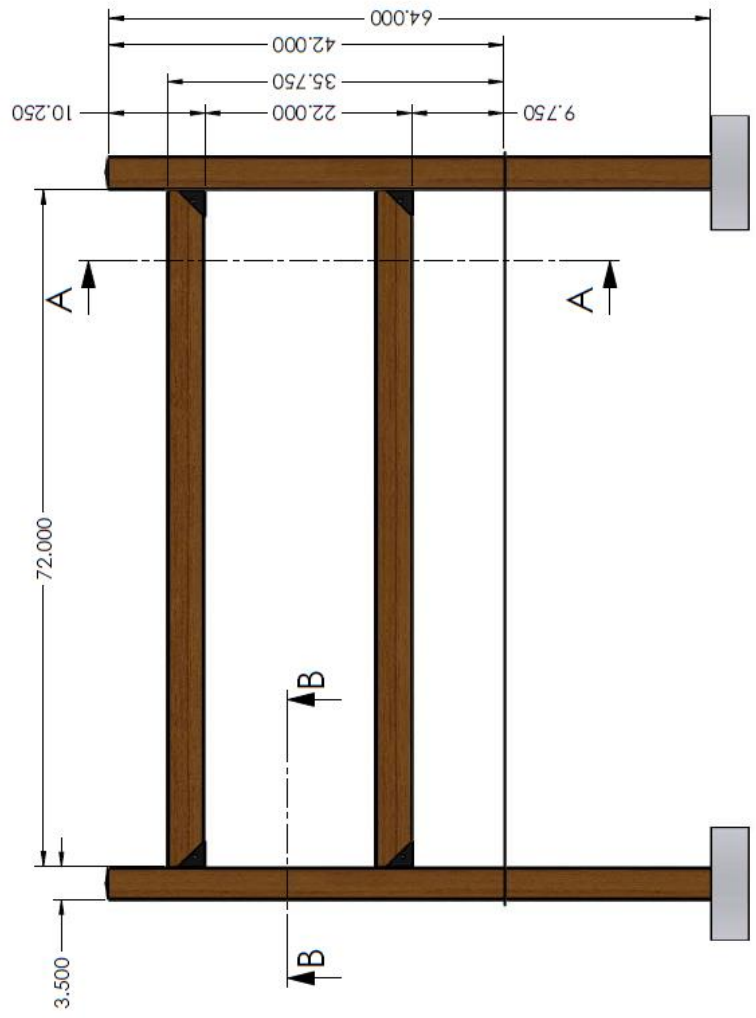


Use heavy duty gate hardware.

36" 2 Rail Fence Bracket Mount



SECTION B-B



SECTION A-A

REVISIONS

ZONE	REV.	DESCRIPTION	DATE	APPROVED
	A	GRAPHIC CHANGES	3/21/2014	PL

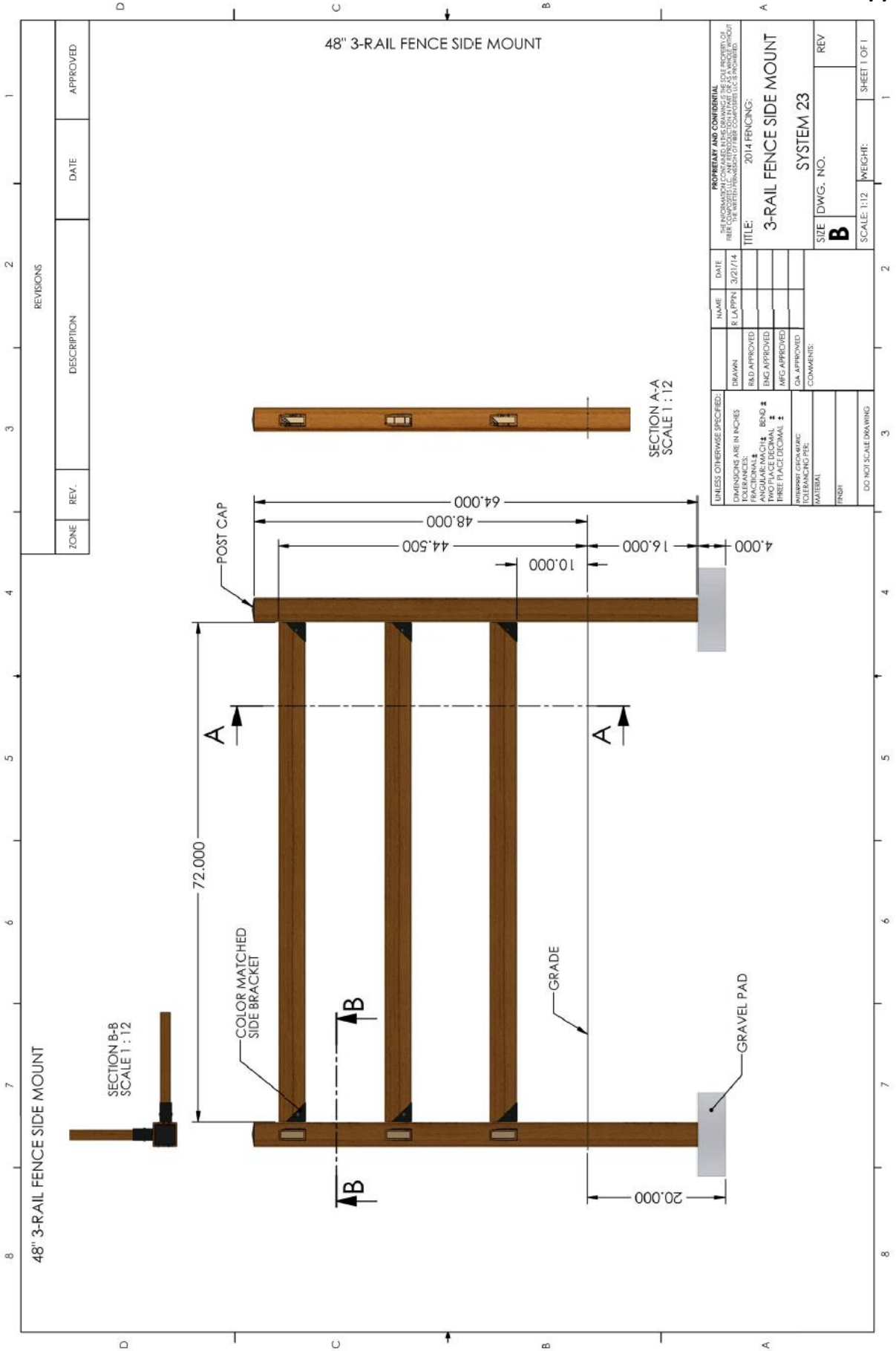
UNLESS OTHERWISE SPECIFIED:		NAME	DATE
DIMENSIONS ARE IN INCHES	DRAWN	R. LAPPIN	2/28/14
TOLERANCES FRACTIONAL	RED APPROVED		
ANGULAR MATCH BEND	ENG APPROVED		
THREE PLACE DECIMAL	MFG APPROVED		
INTERPRET GEOMETRIC TOLERANCING PER MATERIAL	QA APPROVED		
FINISH	COMMENTS:		
DO NOT SCALE DRAWING			

PROPERTY AND CONFIDENTIAL
 THE INFORMATION CONTAINED HEREIN IS THE PROPERTY OF
 WEST COMPOSITE LLC. ANY REPRODUCTION IN WHOLE OR IN PART WITHOUT
 THE WRITTEN PERMISSION OF WEST COMPOSITE LLC IS PROHIBITED.

2014 FBICING
 TITLE: 2-RAIL FENCE SIDE MOUNT
 (72" RAIL)
 SYSTEM 22

SIZE	DWG. NO.	REV
B		A

SCALE: Varies / WEIGHT: SHEET 1 OF 1



48" 3-RAIL FENCE SIDE MOUNT

PROPRIETARY AND CONFIDENTIAL THE INFORMATION CONTAINED HEREIN IS THE PROPERTY OF FERRIS INDUSTRIES, LLC. ANY REPRODUCTION OR TRANSMISSION OF THIS INFORMATION WITHOUT THE WRITTEN PERMISSION OF FERRIS INDUSTRIES, LLC IS PROHIBITED.	
NAME: R LAPPIN	DATE: 3/27/14
DRAWN: R LAPPIN	CHECKED:
BKG APPROVED: 	ENG APPROVED:
MFG APPROVED: 	Q/A APPROVED:
COMMENTS: 	
TITLE: 3-RAIL FENCE SIDE MOUNT	
YEAR: 2014 FENCING:	
SIZE DWG. NO.: B	REV: SYSTEM 23
SCALE: 1:12	HEIGHT: SHEET 1 OF 1

REVISIONS				
ZONE	REV.	DESCRIPTION	DATE	APPROVED